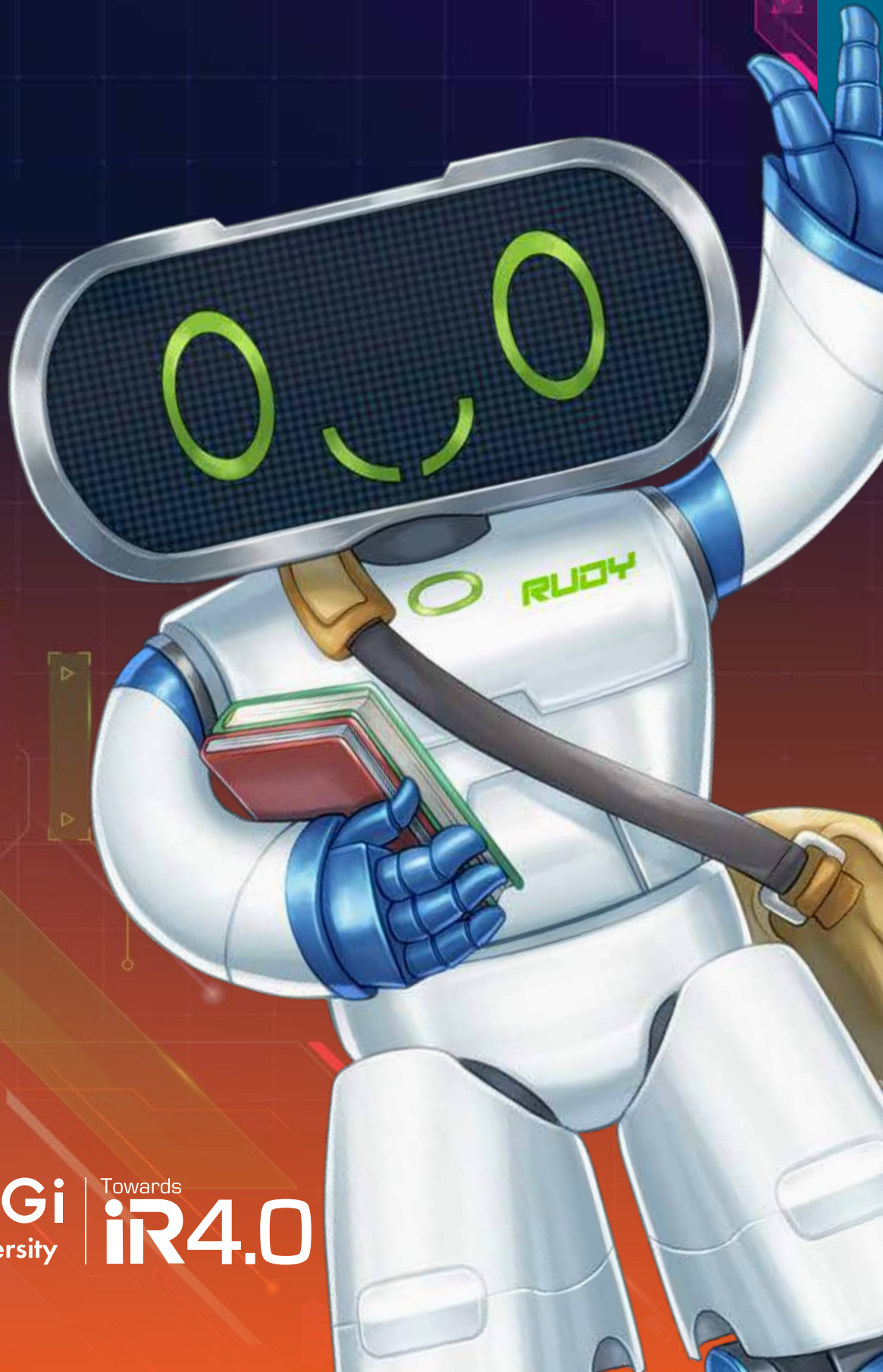


PRE-UNIVERSITY STUDIES

SEGi UNIVERSITY



SEGi
University

Towards
iR4.0

INTRODUCTION TO SEGi UNIVERSITY

SEGi was established in 1977 as Systematic College in the heart of Kuala Lumpur offering professional qualifications. Since its founding over four decades ago, SEGi has undergone significant growth, strengthening the quality of its wide range of programmes from foundation to doctorate level.

It is one of the most established private higher education institutions in Malaysia with its flagship campus located in Kota Damansara and four other campuses in Subang Jaya, Kuala Lumpur, Penang, and Kuching. Currently, SEGi has a population of 20,000 local and international students across its campuses.

SEGi is recognised as “The first Malaysian University that earned 5 Stars for Prioritising Society’s Needs in Malaysia” by QS Stars, an international evaluation system for universities based on auditing.



A SOLID FOUNDATION FOR FUTURE SUCCESS

SEGi University offers a wide range of pre-university programmes recognised by various tertiary institutions in the United Kingdom, Australia, New Zealand, and China. Graduates who have successfully completed their foundation studies have been able to enroll in undergraduate studies in a plethora of areas at SEGi University and other universities worldwide. All our programmes designed to assist students in the transition from secondary education to university life. Students will gain strong fundamental knowledge in the relevant disciplines upon completing the programme.

CONTENTS



Introduction to SEGi University	2
At a Glance	4
SEGi Towards IR4.0	5
Learning & Teaching	6
Study Route	7
Programme Matrix	7
Centre For Foundation Studies - Articulation Partner Universities	8
Programme Modules	9 - 10
Student Testimonials & Faculty Events	11

AT A GLANCE

GLOBAL RECOGNITION

- Double Awards from Top 3.3% of Universities Worldwide (The Centre for World University Rankings 2017 (CWUR) University of Central Lancashire (UCLAN)
- MQA Fully-Accredited Programmes
- 2017 QS Overall 3-star rating with 5-star rating in teaching, facilities, social responsibility, and inclusiveness

SKILLS ENRICHMENT & SUPPORT

- More than 100 SEGi Enrichment Programmes in the areas of leadership, communication, and grooming skills (among others) to enhance students' learning experience
- Academic Skills Unit to assist students in academic writing and effective study, research techniques, time management, academic integrity, and exam preparation
- Mentor-Mentee system to provide guidance to students on academic matters and to foster a close and constructive professional relationship between students and lecturers

EXCELLENT TEACHING, LEARNING & RESEARCH

- QS 5 Stars Rated for Excellence in Teaching
- QS 5 Stars Rated for Facilities
- SETARA, 2017 scored above medium of 83 in the category of Teaching and Learning
- Independent students' 2017 evaluation rating: more than 95% of students rated our lecturers for excellence in teaching
- Academic staff to student ratio 1:21, based on SETARA (2017)
- Research-led environment

GLOBALLY RECOGNISED,
DISTINCTIVELY SEGi.

OUR 6 COMPETITIVE ADVANTAGES

SCHOLARSHIPS

- 1st Malaysian University that earned 5 Stars for Prioritising Society's Needs in Malaysia (by QS Stars)
- Over RM100 million worth of Group scholarships awarded in the past 40 over years
- QS 5 Stars rated for inclusiveness and social responsibility

STUDENT SATISFACTION

- 80% of students are willing to recommend their friends and family to study with us

INDUSTRY DRIVEN GRADUATES

- 2017 SETARA Graduate Employability 85%

Towards

iR4.0

IR4.0 IN A NUTSHELL

The IR4.0 has a big impact on the local economy and community as it changes the job market, which in turn, changes the human capital's qualification requirements. The new-age industries require human capital with relevant and adequate digital and data literacy.

Global data point towards major shifts in perceptions and hiring trends. A study by McKinsey Global Institute shows that one-fifth of the global workforce will be impacted by the adoption of AI and automation. Similarly, another study by Cisco and Oxford Economics found that emerging technologies have the capacity to change 28 million jobs in ASEAN alone.

SEGi's 4R APPROACH

SEGi has taken a calculated view of the new market and has set a strategic direction to achieve its goal of becoming a leading IR4.0 institution. Guided by the drive "Towards IR4.0", we have recognised four thrusts to drive the institution forward.

REIMAGINE possibilities

Increasing the employability and marketability of graduates through the creation of new jobs and roles to meet tomorrow's industry needs.

RECOGNISE your potential

Unleashing the true nature of graduates and their ability to touch lives and make a significant impact on the community

REDEFINE your future

Imbibing the idea of change as the only constant and creating a sustainable future through qualifications that matter

REVOLUTIONISE the market

Introducing innovative programmes that are in tandem with the market's growth and direction



TOP-NOTCH RESOURCES FOR A QUALITY LEARNING EXPERIENCE

INTERNATIONAL COLLABORATIONS

We work with some of the world's most prestigious universities from the United Kingdom and Australia to develop a knowledge-rich and industry-relevant curriculum.

DOUBLE DEGREE PROGRAMMES

SEGi University's business and accounting programmes reflect international recognition. Students enrolled in the Double Degree award programme will graduate with 2 parchments – one from SEGi University and another from University of Central Lancashire, UK.

NURTURING INDUSTRY-READY GRADUATES

In the past 40 years, SEGi University has produced capable graduates who are highly sought-after by employers for their key management skills.

PARTNERSHIPS WITH INDUSTRY

SEGi University establishes strong links with key industry players from a wide range of fields to provide access to internships and job opportunities for our students.

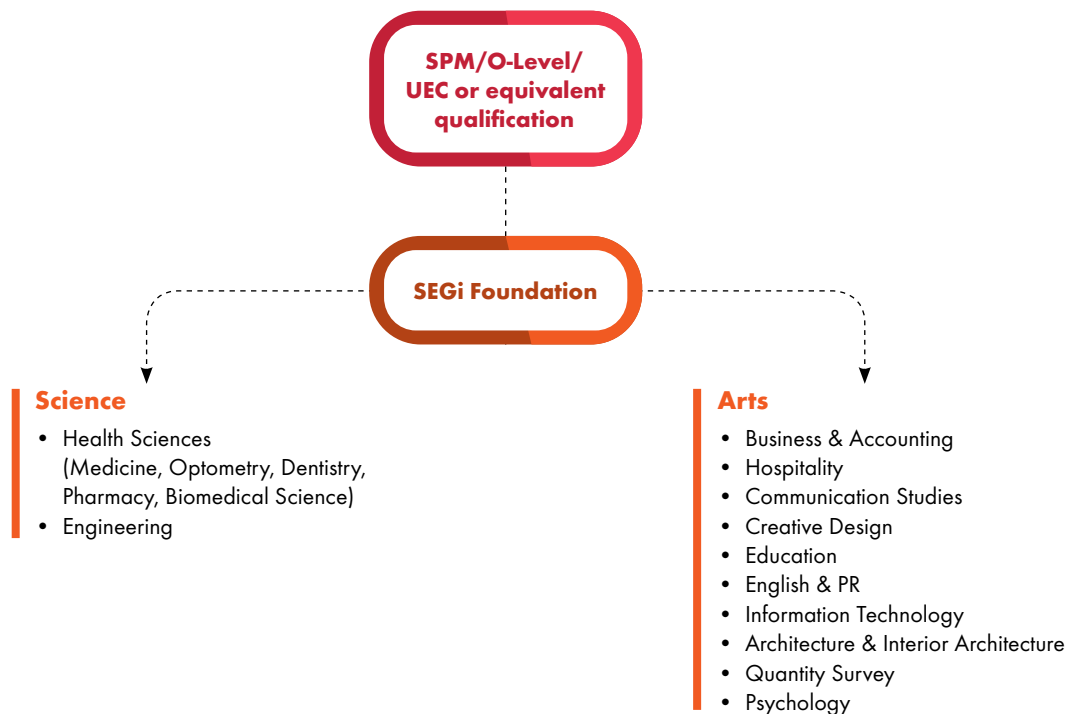
MORE THAN 95% EMPLOYABILITY

More than 95% of our Business Management, Accounting and Accounting & Finance Graduates are employed within 3 months upon graduation.

ESTEEMED INDUSTRY ADVISORS

In line with our brand promise to provide a complete learning experience, we work closely with reputable industry advisors to facilitate the transfer of knowledge and experience.

STUDY ROUTE & PROGRAMME MATRIX



Programme	Awarding Institution	Entry Requirements
Foundation in Science	SEGi	<ul style="list-style-type: none"> • SPM/O-Level - min. 5 credits including Mathematics and 2 Science subjects • UEC - min. B in 3 subjects including Mathematics & 2 Science subjects
Foundation in Arts		<ul style="list-style-type: none"> • SPM/O-Level or equivalent - min. 5 credits

CENTRE FOR FOUNDATION STUDIES - ARTICULATION PARTNER UNIVERSITIES



Partner University	Country	Foundation Programmes	Entry Requirement	Progression Degree Programmes
University of Sunderland	UK	Foundation in Arts	Pass	<ul style="list-style-type: none"> • Bachelor of Arts (Honours) Business & Management
University of Central Lancashire (UCLAN)	UK	Foundation in Arts	Pass	<p>Double Degree*</p> <ul style="list-style-type: none"> • BA (Honours) International Business Administration • BA (Honours) International Business Administration (Financial Management) • BA (Honours) International Business Administration (Human Resource Management) • BA (Honours) International Business Administration (Marketing Management) • BA (Honours) International Accounting • BA (Honours) International Accounting & Finance • Bachelor of Information Technology (Honours) Computer Networking • Bachelor of Information Technology (Honours) Software Engineering • Bachelor of Information Technology (Honours) Business System Design <p>* 2+1 Articulation Pathways: Students are given an option to complete the final year studies at UCLAN</p> <p>Double Degree</p> <ul style="list-style-type: none"> • Bachelor of Arts (Honours) Public Relations with English • Bachelor of Arts (Honours) Mass Communication • Bachelor of Education (Honours) • BEng (Honours) Engineering: Mechanical • BEng (Honours) Engineering: Civil • BEng (Honours) Engineering: Chemical • BEng (Honours) Engineering: Electric & Electronic
Cardiff University	UK	Foundation in Science	CGPA 3.3, and B in SPM English, IGCSE English Grade C or IELTS 6.5, with min 5.5 in each component	<ul style="list-style-type: none"> • All degree programmes in Cardiff School of Engineering
			CGPA 3.0, and B in SPM English, IGCSE English Grade C or IELTS 6.5, with min 5.5 in each component	<ul style="list-style-type: none"> • All degree programmes in Cardiff School of Computer Science & Informatics <p>except BSc Joint Honours Computing & Mathematics and BSc Computer Science with Visual Computing</p>
				<ul style="list-style-type: none"> • BChem & MChem Chemistry degree programmes
Queen's University Belfast	UK	Foundation in Science	Min CGPA 3.3 and above, varies across different programmes.	<ul style="list-style-type: none"> • All Queen's University Management School's degree programmes, plus selected BSc and BA programmes, plus all MEng & BEng Engineering programmes.
		Foundation in Arts	English Language (varies across programmes) - Min grade C6 in 1119 GCE O-level English, or IELTS overall 6.5/6.0 with min 5.5 in each component, or IGCSE English min Grade C (including Speaking and Listening tests).	<ul style="list-style-type: none"> • All Queen's University Management School's degree programmes, *plus selected BSc and BA programmes. <p>excluding BSc Actuarial Science and Risk Management & BSc Economics and Accounting</p>
Troy University	USA	Foundation in Science	Pass Foundation with a min CGPA of 2.0; and credits in Mathematics, Science, Malay/English in SPM	<ul style="list-style-type: none"> • Bachelor of Science in Psychology - Communication Studies minor - Global General Business minor (4+0)

*** All offers are subjected to programme availability and is at the discretion of the articulation partner universities to approve student's admission.

FOUNDATION IN SCIENCE

SEGi UNIVERSITY

The foundation programme is shaped to equip you with the knowledge, skills, and practice needed to bridge you from secondary studies to tertiary level.

We provide a strong foundation for those intending to pursue programmes in Health Sciences, and Engineering. The foundation programme will guarantee your entry into above par degree programmes with SEGi as well as UK universities in collaboration with SEGi. The foundation programme enables you to gain direct entry into respective degree programmes.

Programme Modules

Semester 1

- Chemistry 1
- Mathematics 1
- Elective 1*
- Elective 2*

Semester 3

- Chemistry 3
- Mathematics 3
- Academic English
- Computer Application
- Elective 5*

Semester 2

- Chemistry 2
- Mathematics 2
- Elective 3*
- Elective 4*

Elective (by Specialisation)*

General

- Biology 1
- Physics 1
- Biology 2
- Physics 2
- Physics 3

Health Sciences

- Biology 1
- Public Speaking
- Biology 2
- Information Technology
- Introduction to Patient Care/
Critical Thinking Skills

Engineering

- Physics 1
- Public Speaking
- Physics 2
- Information Technology
- Physics 3

* Electives are subject to change without prior notice.

* Students intending to articulate into the Health Science degree programmes will have a choice to take either General or Health Sciences Pathway.

* Students intending to articulate into Engineering degree programmes will have a choice to take either General or Engineering Pathway.

Why study this programme?

This qualification is specially designed for students with SPM, O-Level or equivalent qualifications. Upon successful completion of this programme, students may enroll in a range of health science or engineering degree programmes.

The foundation year is an introductory programme that will equip students with the skills and knowledge to further their studies locally or internationally. Students are exposed to modules which groom them to be creative thinkers who could solve problems constructively and creatively. This programme also enables students to develop a range of practical skills and solid knowledge, preparing them for smooth progress to a degree of their choice.

Programme Modules

Semester 1

- General Language Training
- Computer Application
- Introduction to Business
- Statistics

Semester 3

- Public Speaking
- Critical Thinking Skills
- Principles of Economics
- Elective 5*

Semester 2

- Academic English
- Elective 1*
- Elective 2*
- Elective 3*
- Elective 4*

* Students will have to choose the electives according to the discipline of undergraduate studies they intend to pursue.

* Electives

Business & Accounting

- Introduction to Financial Accounting
- Fundamental of Management
- Intercultural Communication
- Information Technology
- Introduction to Marketing

Quantity Survey/Hospitality/Education

- Information Technology
- Interpersonal Communication
- Fundamental of Management
- Introduction to Marketing
- Intercultural Communication

Communication Studies/English & PR

- Interpersonal Communication
- Intercultural Communication
- Fundamental Photography
- Information Technology
- Introduction to Marketing

Information Technology

- Programming Methodology
- Interpersonal Communication
- Fundamental of Management
- Intercultural Communication
- Information Technology

Creative Design/Architecture/Interior Architecture/Psychology

- Colour & Form
- Drawing Fundamentals
- Fundamental Photography
- Intercultural Communication
- Interpersonal Communication

Why study this programme?

This qualification is specially designed for students with SPM, O-Level or equivalent qualifications and who would like to pursue a bachelor degree at the university. Upon successful completion of the Foundation in Arts programme, students may further their studies in a wide range of degree programmes depending on the units completed in this programme.

* Electives are subject to change without prior notice.

STUDENT TESTIMONIALS



"Sadly i was one of those many unfortunate students who started their first year in college online due to the COVID-19 pandemic. However, the experience was not as bad as i had expected and it feels great to be one of many to overcome the difficulties of online learning for the first time. I thought I wouldn't be able to get used to the new mode of learning but the friendly, patient and helpful lecturers and balanced hybrid curriculum made it possible for me to enjoy studying from home and, whenever possible, at the campus. I was lucky to be able to have a taste of college life during my 2nd semester and it was fun to meet the lecturers and classmates face-to-face and to benefit from the well-equipped laboratories during practical's."

Maria-Therese Lim Jia Qing



"SEGi university is one of the hidden treasures in higher education, not disguised by expensive equipment but in all honesty, a university that provides quality education. My foundation experience in SEGi, leading to my degree has been a great experience. Facilities are simple and accommodating. How I see it, this helps students to get more creative and critical when paired with limited resources. A melting pot when it comes to the people too, all sorts of cultures. All in all, I am proud to be a student of SEGI university."

Ian Haziq Macquistan Bin Ian Rashid Macquistan

FACULTY EVENTS



Foundation Awards Ceremony & Programme Preview Session

SEGi University's Centre for Pre-U Studies teamed up with the Student Affairs Division to organise a Programme Preview Session & Foundation Awards Ceremony for its graduates. The Programme Preview Session gives an opportunity for representatives from various faculties at SEGi University to share about our Bachelor's degree programmes with choices to graduate from either SEGi University or any of our partner universities from the UK, USA, and Australia. The session is usually followed by the Awards Ceremony for Foundation graduates to reward them for their co-curricular and academic achievements. Amongst the awards that are usually conferred include the Most Participative Student award and the Dean's List award.

segiuniversity.edu.my



SEGi University Kota Damansara (100589-U)
No. 9, Jalan Teknologi, Taman Sains Selangor, Kota Damansara,
PJU 5, 47810 Petaling Jaya, Selangor Darul Ehsan.
☎ 603 6145 1777
📍 011 1210 6389

The best in you, made
POSSIBLE

The information in this brochure is correct at the time of printing (June 2021).
Changes may be made without prior notice. Copyright 2021. All rights reserved.

Chat with us today!
SCAN HERE

